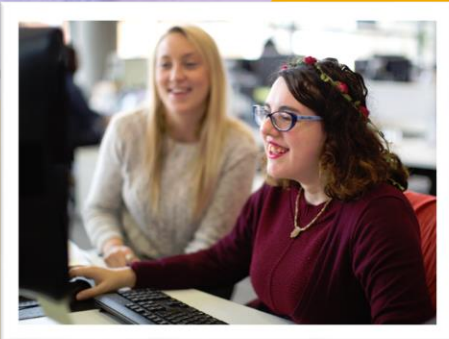


# Role Profile: Early Years Assistant

mencap



## What you will do

Assist with the provision of a stimulating, caring, and therapeutic play environment. You will work alongside early years colleagues, multi-disciplinary teams, family support colleagues and other professionals to offer care, learning through play and therapy opportunities to ensure each child can reach their fullest potential during their engagement with our service.

You will work in compliance with our internal and external requirements so that the people we support can trust, feel safe and have confidence in the support we provide for them.

## About you

You are passionate about supporting children to achieve their full potential through therapeutic play

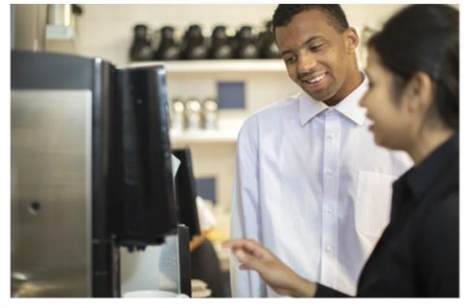
Candidates from all backgrounds welcome! We are looking for people with a passion and drive to improve the lives of people with a learning disability.

## What you will bring

- Enthusiasm and commitment for the work that you do.
- Understanding of best practice when working with children and their families.
- Ability to work effectively and collaboratively with all colleagues and other professionals to deliver an effective service to the children and families we support.
- A supportive and empathetic approach to working with children, families, staff and volunteers.

## Your experience

- Relevant Childcare qualification at QCF Level 2 or equivalent in Child Care, Learning Development or Play work
- Minimum of 1 years experience working with children aged 0-4 and their families
- Experience working with children with special educational needs
- Knowledge of child development and age appropriate activities
- Ability to develop sensitive child centred relationships with children individually and in groups.



## More information about the role

You will:

- Support children to develop their skills, promote independence, achieve their potential and support school 'readiness'
- Contribute to and work to agreed children's care plans, carrying out observations, planning child centred activities and maintaining associated paperwork
- Be required to record and report in line organisational policy
- Follow group and individual therapy programmes under the guidance of allied health professionals.
- Adhere to safe working practices to promote personal safety and the safety of others
- Assist in the individual support, care needs and medical interventions of children, once trained to do so (including but not excluding gastro and nasogastric feeding, suctioning and tracheostomy care, administering medication.)
- Assist with the preparation of the children's centre before each session and tidy away at the end of the day, ensuring good cleaning and hygiene standards.

Join the team and be part of an organisation passionate about making the UK the best place for people with a learning disability to live happy and healthy lives.

## What will Mencap give you

- 24 days annual leave and bank holidays (pro rata's and dependent on contract)
- Amazing benefits & pension
- Full training and support in your role

## How to apply

Please apply with an up to date CV that demonstrates your skills and experiences relevant for this position.

If you require any further information please contact our Recruitment Team on 01733 246699

# Who you can expect to work with

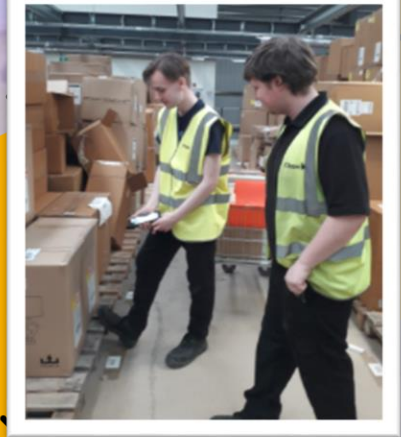
Children with a learning disability and/or additional need

Families and carers of children

Mencap NI Children Centre Colleagues

Multi-disciplinary Teams

Key staff within statutory organisations



# Mencap's values and how they apply to this role

We are **Passionate** about making the world a better place

You will be passionate about how you and your team can improve the lives of the people with a learning disability, reflecting always how you and your team can learn and improve

We are **Inclusive** of everyone

You will be inclusive by making sure that you support all Mencap colleagues and volunteers. Within your team you will work to make sure all voices are heard, and different views listened to

We are **Brave** we challenge and try new things

You will be brave by encouraging people to have big ideas about what would make their team the best place to work, and you will test things out and learn from mistakes

We are **Positive** in our work and with each other

You will be positive in how you work with your team. You will encourage them to share their own ideas and encourage honest and open conversations about what could be better

We are **Kind** to everyone

You will be kind and considerate in all your interactions, and will call out any behaviour that is not, so that people feel it is a safe place to work